

NAME –

UID –

BRANCH – BTECH CSE

SEC-

SEM – 4TH

SUBJECT – SOFTWARE ENGINEERING

Bank ATM UML use case diagrams examples

Purpose: Describe use cases that an automated teller machine (ATM) or the automatic banking machine (ABM) provides to the bank customers.

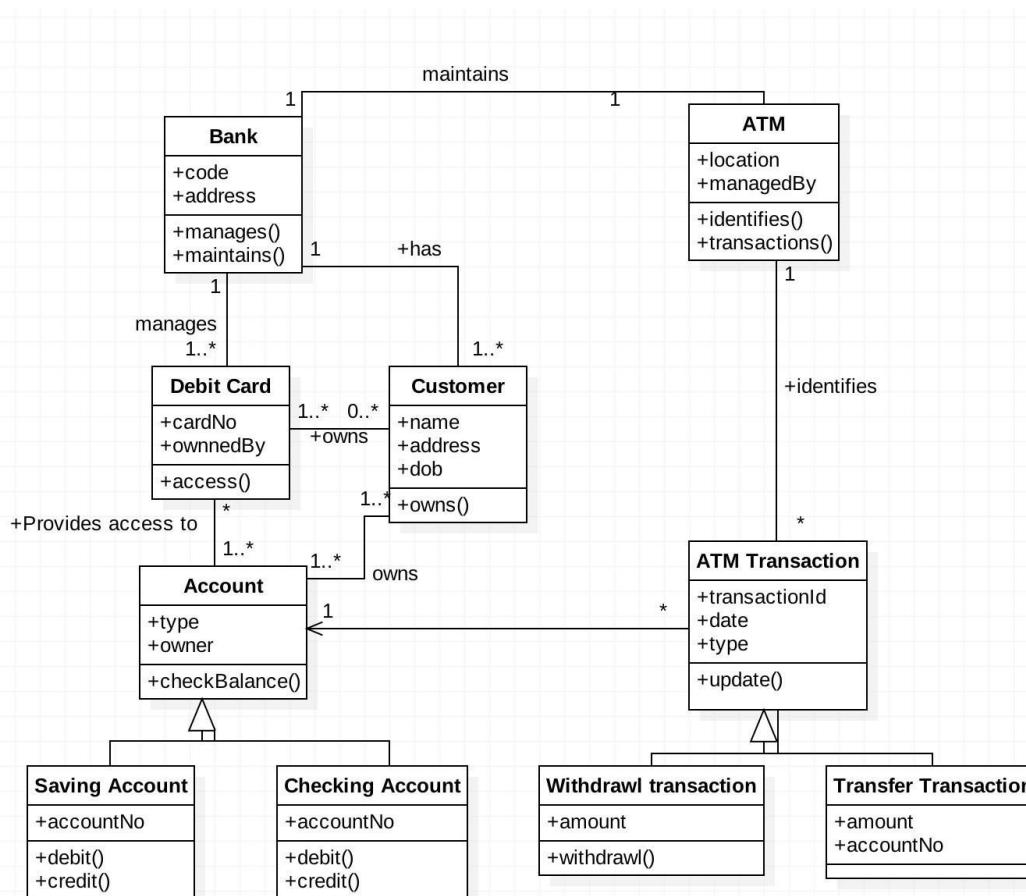
Summary: Customer uses a bank ATM to check balances of his/her bank accounts, deposit funds, withdraw cash and/or transfer funds (use cases). ATM Technician provides maintenance and repairs to the ATM.

For Data: Class diagram

Class Diagram:- Class diagrams describe the static structure of a system, or how it is structured rather than how it behaves.

These diagrams contain the following elements:

1. Classes, which represent entities with common characteristics or features. These features include attributes, operations, and associations.
2. Associations, which represent relationships that relate two or more other classes where the relationships have common characteristics or features. These features include attributes and operations.



For Function: Use case, Sequence, Collaboration/Communication

Use Case Diagram: Use case diagrams describe the functionality of a system and users of the system. They contain the following elements:

1. Actors, which represent users of a system, including human users and other systems
2. Use cases, which represent functionality or services provided by a system to Here, is a use case diagram for the ATM System.

